

# HB 2017 Transit Advisory Committee

June 26, 2020




# Webex Tutorial

## Chat

- Right side window
- Chats are recorded

## Participants

- Right side window
- Raise your hand 

Video On/Off

Mute/Unmute

Leave Meeting



# Meeting Agenda

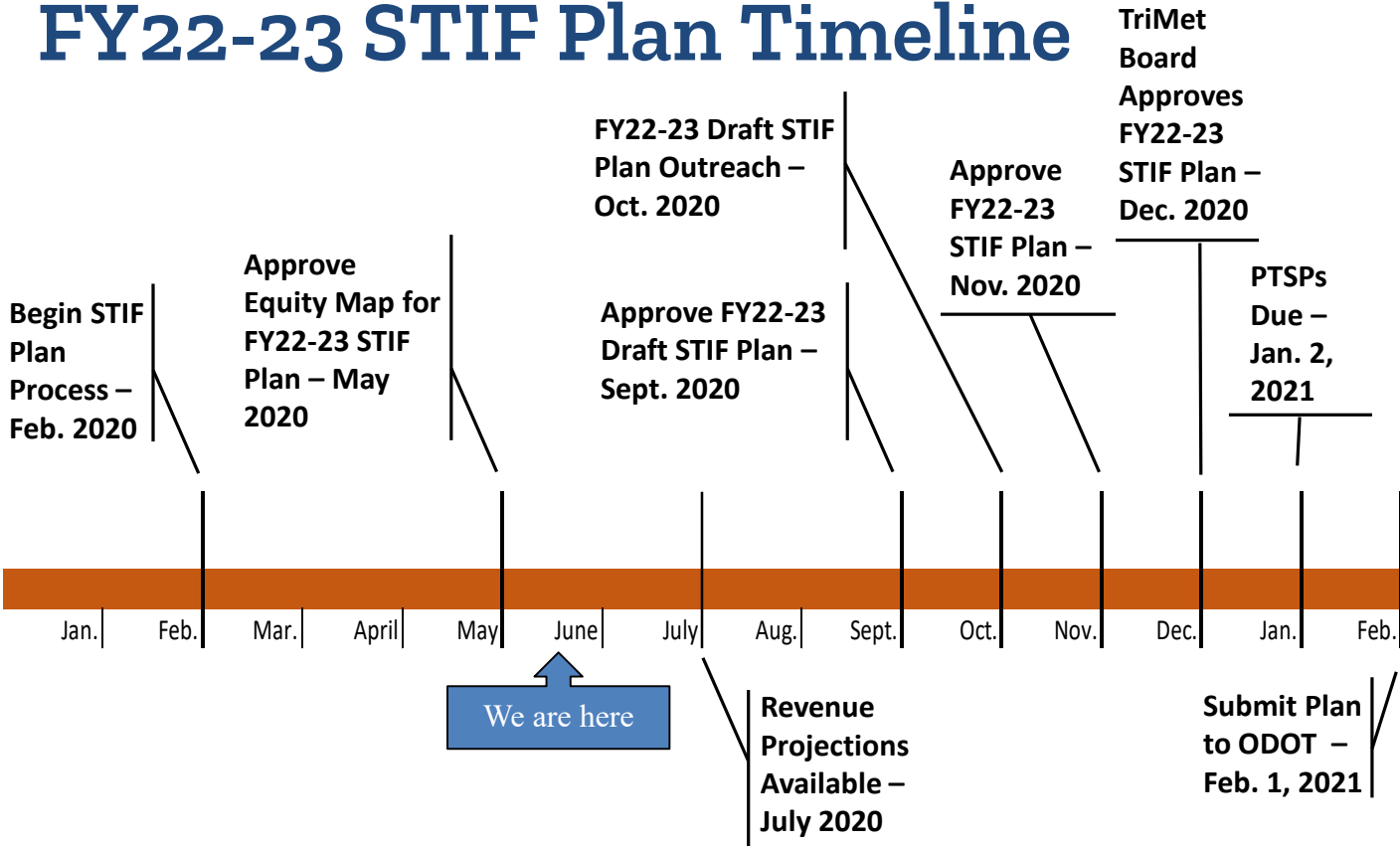
Public Comment	8:00 a.m.
STIF Formula Funds Timeline	8:15 a.m.
STIF/STF Merge	8:30 a.m.
STIF Discretionary Funds	8:45 a.m.
Out of District Providers Update	9:00 a.m.
Meeting Adjourns	9:30 a.m.



# Public Comment



# FY22-23 STIF Plan Timeline



# STIF Formula Funds Deadline

**February 1, 2021:**

- Formally November 1, 2020
- More time to assess the impact of COVID-19
  - STIF revenues are two quarters behind – COVID impact in Jan. 2021
  - TriMet's July employer payroll tax revenue should give us a sense of the STIF revenue shortfall
- Wait for next disbursement before further funding projections
- Aim to have the committee approve the plan in November 2020



# STIF/STF Merge

## June 2020 Oregon Legislature Special Session: SB 1601

- STIF funds are merged with STF funds
  - The STF funds are pegged to the 2019-21 biennium levels, with adjustments as STIF funds increase/decrease
  - STF funds are distributed by population - minimum \$67,000
  - 90% of funds return to area generated
  - New STIF criteria: Services to seniors and people with disabilities
- STIF program changes
  - STIF funds can be used to maintain existing transit service
  - 4% of STIF funds go to ODOT for administration - estimate
  - With OTC approval, funds can be taken off the top to pay for “projects of statewide significance that support the transit network and manage the operation of public transportation services”



# STIF Discretionary Funds Deadline

## FY19-21

- Express/Limited Stop Bus Network Study
- Transit Spot Improvements Program
- Friends of Frog Ferry

## FY22-23:

- Application deadline on November 1, 2020
- Open to all jurisdictions and private entities





# Out of District Provider Updates

## Today's Meeting

- Washington County
- Multnomah County
- Columbia

## July Meeting:

- Clackamas County
  - SMART
  - Sandy Transit
  - Canby Area Transit
  - South Clackamas County





# Public Transportation Plan

Washington County

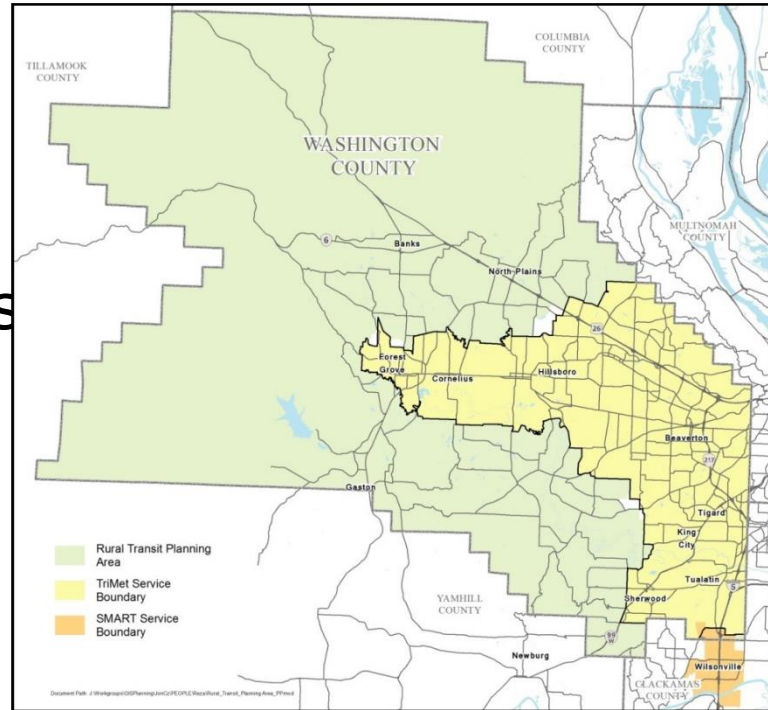
HB 2017 Transit Advisory Committee

June 26, 2020

# Public transportation plan

Funding for:

- Areas outside of TriMet and SMART districts
- Regional coordination within TriMet district



# Regional coordination services

- North Hillsboro shuttle FY 19
- Grove Link FY 21
- Tualatin shuttle FY 21
- South Beaverton shuttle plan FY 21

# Service outside TriMet and Smart districts

- West Link expansion (North Plains, Banks, Hillsboro, Forest Grove) FY 21
- Demand response service area expansion FY 21
- Rural/Farm workforce shuttle FY 21
- Tillamook Wave, YAMCO, Columbia County service coordination FY 21

# Other funded projects

- Transit development plan
- Marketing/Communication



Thank you

**Chris Deffebach**

Senior Policy Analyst  
Washington County

**Julie Wilcke Pilmer**

CEO

Ride Connection, Inc.



A stylized graphic on the left side of the slide. It features two dark green mountain peaks with rounded tops. Below the mountains is a dark green wavy band representing a valley or a road. At the bottom is a dark blue wavy band representing water. The graphic is composed of solid colors and white outlines.

# Multnomah County Transit Services

Jessica Berry, Transportation  
Planning and Development  
Manager

HB 2017 Transit Advisory Committee

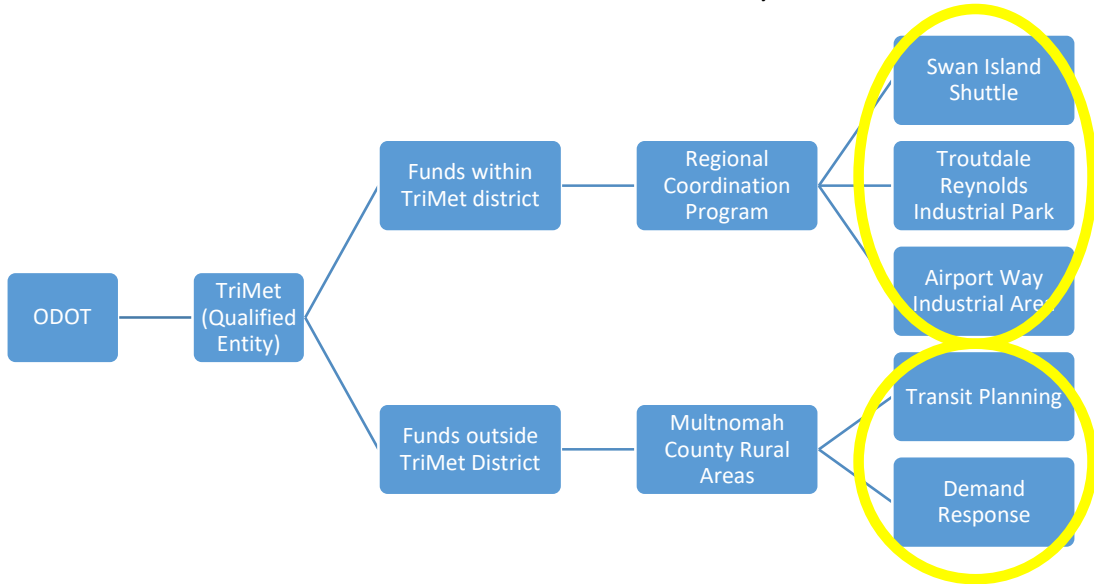
June 26, 2020



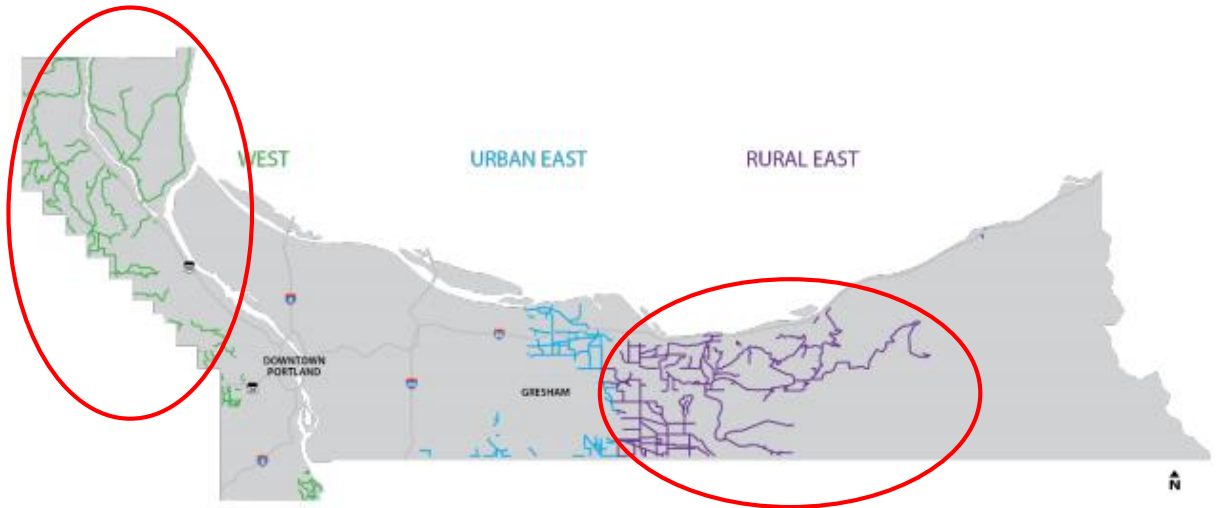
## Multnomah County Transit Services

- Rural Transit (Projected revenue: \$117k)
  - Conduct needs assessment and develop plan to provide services, begin demand response service
- Job Connectors/Shuttles (Projected revenue: \$1.4M)
  - New Service in Columbia Corridor
  - New Service in Troutdale Reynolds Industrial Park
  - Service on Swan Island

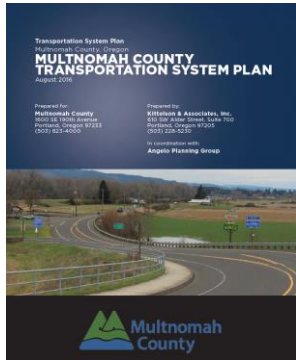
# How the funds come to Multnomah County



# Multnomah County Transit Services – Rural



# Rural Transit



1. Fehr and Peers are updating our Transportation System Plan for Rural Areas to include a Transit Element, Develop discrete projects in the plan.
2. We are in contract negotiations for a demand response service and/or non medical trips (this project is in the Region's Coordinated Transportation Plan for Human Services) – will help us determine transit needs.

# Multnomah County Transit Services – Regional Coordination



## Troutdale Reynolds Industrial Park Shuttle



1. This project is currently in operation on Saturday and Sunday only, mornings and afternoons
2. This free shuttle mimics line 81; which operates all other days of the week.
3. Due to limited COVID limiting capacity on the shuttle, Amazon is running a supplemental service at the same time.
4. Ridership is approximately 45 per day

# Swan Island Shuttle

## Swan Island Evening Shuttle

A free shuttle running from the Rose District with TriMet connections from downtown Portland. The shuttle runs from 6:30pm to midnight providing access to jobs through this industrial area, providing by request service to/from Mock's Bottom and the shipyards. Operated with a grant from TriMet. PCC is contracting with ecoShuttle for this service. If you have questions, comments, suggestions or complaints, call PCC's Transportation and Parking Office at 971-722-8181.

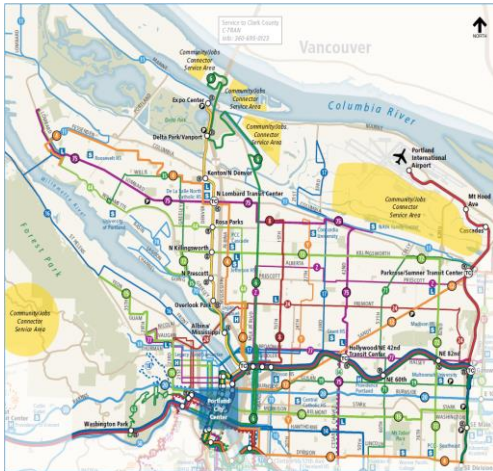
- For pick up, call 503-757-7152 at least 30 minutes ahead and leave a message.
- For drop off, make request to operator upon boarding.



Rose Quarter TC	N. Anchor & Lagoon	FedEx Parking Lot	N. Basin & Fathom	N. Anchor & Channel	N. Anchor & Channel
6:36	6:43	6:48	6:53	6:58	7:06
7:16	7:23	7:28	7:33	7:38	7:46
7:56	8:03	8:08	8:13	8:18	8:26
8:36	8:43	8:48	8:53	8:58	9:06
9:16	9:23	9:28	9:33	9:38	9:46
9:56	10:03	10:08	10:13	10:18	10:26
10:36	10:43	10:48	10:53	10:58	11:06
11:16	11:23	11:28	11:33	11:38	11:46
11:56	12:03	12:08	12:13	12:18	12:26

1. This project is currently in operation.
2. This Free Shuttle operates 5 days/week in the evenings. It mimics the fixed route service that doesn't operate in the evenings.
3. The service has on average 50 riders/evening.

# Airport Way Industrial Area Shuttle



1. Planning effort is beginning now for this future service
2. Partnership of Multnomah County, Portland and Port of Portland to determine outreach and route





Questions?

Jessica Berry

[Jessica.berry@multco.us](mailto:Jessica.berry@multco.us)

<https://multco.us/transit-services>

**COLUMBIA COUNTY**

Transit Department: CC Rider



ST. HELENS, OR 97051

1155 Deer Island Rd.

Direct (503) 366-0159

[www.columbiacountyrider.com](http://www.columbiacountyrider.com)

**Proposed Plan**

**Approved Plan**

- \* 2 Additional Line 1 runs
- \* 2 Additional Line 2 runs
- \* 2 Additional MultCo stops
- \* 2 Additional WashCo stops

- \* 1 1/2 Additional Line 1 runs
- \* 2 Additional MultCo stops

**Proposed Budget**

**Approved Budget**

2019	\$138,939	\$59,024
2020	\$132,123	\$53,221
2021	\$135,431	\$56,600
	<b>\$406,493</b>	<b>\$168,845</b>
	100%	42%



# Meeting Adjourned

